

Marler's Landing

A REPLAT OF A LOT 177, BLOCK D, SECOND REVISION OF CALHOUNS SUBDIVISION RECORDED IN PLAT BOOK 2, PAGE 43A, OF THE PUBLIC RECORDS OF OKALOOSA COUNTY, FLORIDA; SITUATED IN UNDIVIDED TOWNSHIP 2 SOUTH, RANGE 22 WEST, CITY OF DESTIN, OKALOOSA COUNTY, FLORIDA.

GENERAL NOTES:

- BEARINGS SHOWN HEREON ARE REFERENCED TO THE NORTH RIGHT OF WAY LINE OF KELLY STREET, AS BEING N 39°40'00" W (CALCULATED PER PLAT).
- THERE MAY BE ADDITIONAL RESTRICTIONS THAT ARE NOT SHOWN ON THIS SURVEY THAT MAY BE FOUND IN THE PUBLIC RECORDS OF OKALOOSA COUNTY, FLORIDA.
- GRAPHIC SYMBOLISM OF CORNER MONUMENTATION, UTILITIES, SIGNS, ETCETERA, ARE EXAGGERATED FOR CLARITY AND ARE NOT TO SCALE. THE CENTER POINT OF WHICH IS ACCURATELY PLOTTED TO SCALE AND/OR DIMENSIONED THERE TO.

DESCRIPTION:

LOT 177, BLOCK D, SECOND REVISION OF CALHOUNS SUBDIVISION AS RECORDED IN PLAT BOOK 2, PAGE 43A OF THE PUBLIC RECORDS OF OKALOOSA COUNTY, FLORIDA.

TITLE OPINION:

IT IS THE OPINION OF THE UNDERSIGNED ATTORNEY AT LAW, THAT TITLE TO LAND DESCRIBED HEREON, IS IN THE NAME OF THE DEDICATORS, AS SHOWN HEREON AND THERE ARE NO UNSATISFIED MORTGAGES ON THE LAND, EXCEPT AS SHOWN.

M. Violette
 SIGNATURE
Mark Violette
 PRINT NAME
 0144916
 FLORIDA BAR NUMBER
 9/19/2012
 DATE

COMMUNITY DEVELOPMENT DEPARTMENT APPROVAL:

THIS CERTIFIES THAT THIS PLAT WAS PRESENTED TO THE COMMUNITY DEVELOPMENT DEPARTMENT, CITY OF DESTIN, FLORIDA AND APPROVED BY THEM ON THE 3rd DAY OF October, 2012.

[Signature]
 HERBICK GALLANDER, COMMUNITY DEVELOPMENT DIRECTOR

PUBLIC SERVICES DEPARTMENT APPROVAL:

THIS IS TO CERTIFY THAT THIS PLAT WAS PRESENTED TO THE PUBLIC SERVICES DEPARTMENT, CITY OF DESTIN, FLORIDA AND WAS APPROVED BY THEM ON THE 4th DAY OF October, 2012.

[Signature]
 STEVEN SCHMIDT, PUBLIC SERVICES DIRECTOR

CITY OF DESTIN APPROVAL:

THE CITY OF DESTIN, HAVING EXAMINED THE WRITTEN PLAT ON THE 4th DAY OF October, 2012, DOES HEREBY APPROVE THE PLAT FOR RECORD.

[Signature]
 REY BAILEY, CITY CLERK

DEDICATION:

LAWRENCE E. MARLER, THE OWNER OF PROPERTY SHOWN AND DESCRIBED HEREON, DOES HEREBY DEDICATE THIS PLAT OF MARLER'S LANDING, NO DEDICATION OF LANDS TO THE PUBLIC IS HEREBY MADE. THE OWNER HAS EXECUTED THIS DEDICATION THIS DAY OF 28th September, 2012.

[Signature]
 WITNESS
[Signature]
 SIGNATURE
LAWRENCE E. MARLER
 PRINT NAME

ACKNOWLEDGMENT TO DEDICATION:

STATE OF FLORIDA
 COUNTY OF OKALOOSA
 BEFORE ME, THE UNDERSIGNED, PERSONALLY APPEARED, LAWRENCE E. MARLER KNOWN TO ME TO BE THE INDIVIDUAL DESCRIBED IN THE FOREGOING DEDICATION AND ACKNOWLEDGED BEFORE ME THAT HE EXECUTED THE SAME FOR THE PURPOSES SET FORTH. ON THE 28th DAY OF September, 2012.

[Signature]
 NOTARY PUBLIC
 My commission expires 12/31/2013

CITY SURVEYOR'S CERTIFICATE:

THIS IS TO CERTIFY THAT THIS PLAT WAS REVIEWED BY THE CITY SURVEYOR OF THE CITY OF DESTIN, OKALOOSA COUNTY, FLORIDA AND MEETS THE REQUIREMENTS OF CHAPTER 177 OF THE FLORIDA STATUTES AND WAS APPROVED BY HIM ON THE 3rd DAY OF October, 2012.

[Signature]
 CHAD H. THURNER, CITY SURVEYOR
 FLORIDA REGISTRATION NO. 6483

COUNTY CLERK'S CERTIFICATE:

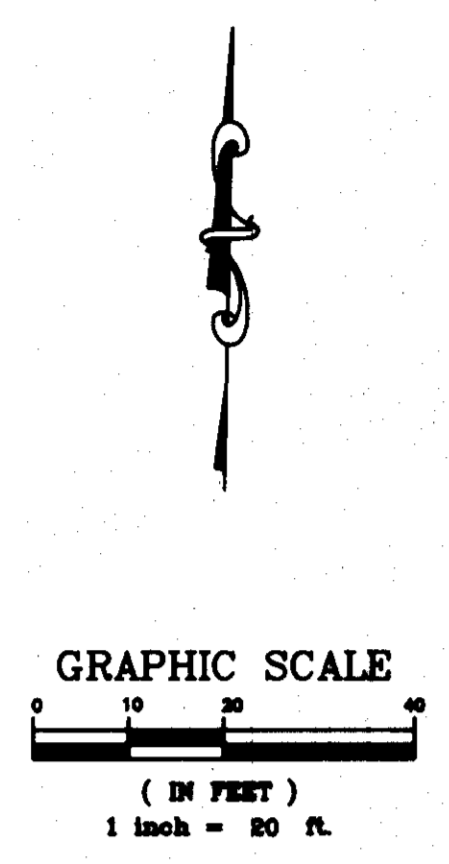
I, DON W. HOWARD, CLERK OF THE CIRCUIT COURT OF OKALOOSA COUNTY, FLORIDA, HEREBY CERTIFY THAT THIS PLAT WAS FILED FOR RECORD ON THE 4th DAY OF October, 2012, IN PLAT BOOK 26, AT PAGE 19.

[Signature]
 DON W. HOWARD, CLERK OF COURT

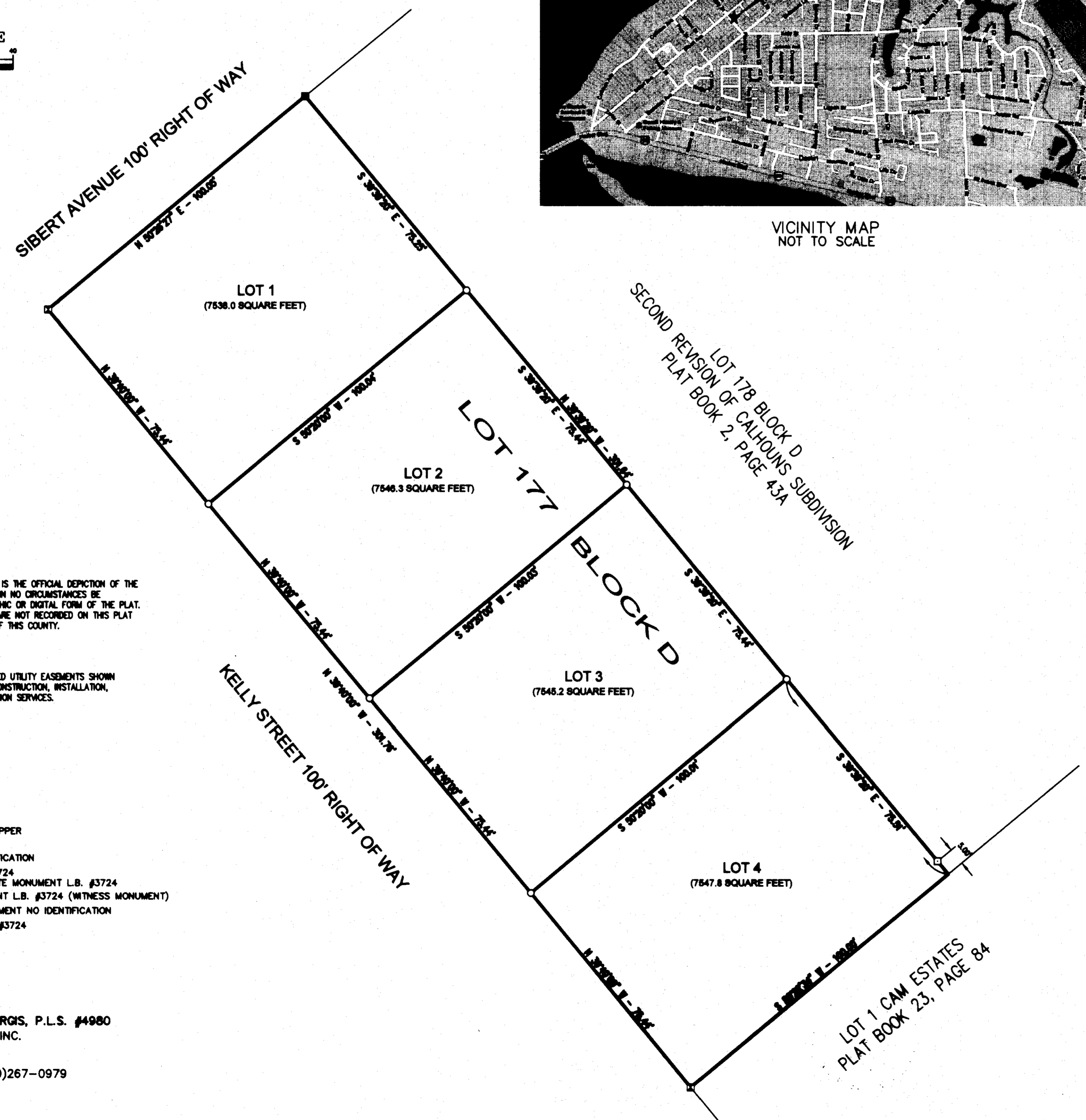
SURVEYOR'S CERTIFICATE:

I HEREBY CERTIFY THAT THIS PLAT IS A TRUE AND CORRECT REPRESENTATION OF THE LANDS SURVEYED, THAT THE SURVEY WAS MADE UNDER MY RESPONSIBLE DIRECTION AND SUPERVISION, THAT PERMANENT REFERENCE MONUMENTS HAVE BEEN PLACED AS SHOWN AND THAT THE SURVEY DATA COMPLIES WITH ALL THE REQUIREMENTS OF CHAPTER 177, OF THE FLORIDA STATUTES.

[Signature]
 DARYL E.W. BURGIS, P.E.
 EMERALD COAST ASSOCIATES, INC.
 179 COUNTY HIGHWAY 393 SOUTH
 SANTA ROSA BEACH, FLORIDA 32459
 FLORIDA REGISTRATION NO. 4800
 L.B. NO. 3724



VICINITY MAP
 NOT TO SCALE



NOTICE:

THIS PLAT, AS RECORDED IN ITS GRAPHIC FORM, IS THE OFFICIAL DEPICTION OF THE SUBDIVIDED LANDS DESCRIBED HEREIN AND WILL IN NO CIRCUMSTANCES BE SUPPLANTED IN AUTHORITY BY ANY OTHER GRAPHIC OR DIGITAL FORM OF THE PLAT. THERE MAY BE ADDITIONAL RESTRICTIONS THAT ARE NOT RECORDED ON THIS PLAT THAT MAY BE FOUND IN THE PUBLIC RECORDS OF THIS COUNTY.

NOTICE:

PURSUANT TO CHAPTER 177.091(28), ALL PLATTED UTILITY EASEMENTS SHOWN HEREON SHALL ALSO BE EASEMENTS FOR THE CONSTRUCTION, INSTALLATION, MAINTENANCE AND OPERATION OF CABLE TELEVISION SERVICES.

LEGEND:

- No. = NUMBER
- # = NUMBER
- L.B. = LICENSED BUSINESS
- L.S. = LICENSED SURVEYOR
- P.S.M. = PROFESSIONAL SURVEYOR AND MAPPER
- O.R. = OFFICIAL RECORDS
- = FOUND 5/8" IRON ROD NO IDENTIFICATION
- = FOUND CAPPED IRON ROD L.B. #3724 REPLACED WITH 4" BY 4" CONCRETE MONUMENT L.B. #3724
- = SET 4" BY 4" CONCRETE MONUMENT L.B. #3724 (WITNESS MONUMENT)
- ⊠ = FOUND 4" BY 4" CONCRETE MONUMENT NO IDENTIFICATION
- = SET 1/2" CAPPED IRON ROD L.B. #3724

PREPARED BY: DARYL E.W. BURGIS, P.L.S. #4980
 EMERALD COAST ASSOCIATES, INC.
 179 COUNTY HIGHWAY 393 SOUTH
 SANTA ROSA BEACH, FLORIDA 32459
 PH: (850)267-0473, FAX: (850)267-0979
 Email: ECA@ECA-FL.COM
 PROJECT NUMBER: 12-041

