

MIKSTAKEL

A RESUBDIVISION OF LOTS 8 AND 9, SKEETER SUBDIVISION,
 PLAT BOOK 6, PAGE 10, OKALOOSA COUNTY, FLORIDA,
 LYING IN TOWNSHIP 2 SOUTH, RANGE 22 WEST - CITY OF DESTIN.

DEDICATION

KNOW ALL MEN BY THESE PRESENTS, THAT EXCELLENCE DEVELOPMENT, INC. OWNER AND FIRST NATIONAL BANK OF DESTIN, MORTGAGEES OF "MIKSTAKEL" DO HEREBY DEDICATE TO THE PUBLIC IN FEE SIMPLE, ALL STREETS, ROADS, THOROUGHFARES, AND EASEMENTS SHOWN HEREON.

WITNESS THE NAMES AND SEALS OF SAID DEDICATORS:

SIGNED: EXCELLENCE DEVELOPMENT, INC.

BY: Jerry McCormick AS PRESIDENT
 JERRY MCCORMICK

ATTESTED BY: Stacy McCosmick

SIGNED: FIRST NATIONAL BANK OF DESTIN

BY: Sterl Rainer AS SENIOR VICE PRESIDENT
 STERL RAINER

ATTESTED BY: Stacy McCosmick

ACKNOWLEDGEMENT

STATE OF FLORIDA, COUNTY OF OKALOOSA

BEFORE THE SUBSCRIBER PERSONALLY APPEARED JERRY MCCORMICK, AS PRESIDENT OF EXCELLENCE DEVELOPMENT, INC., AND STERL RAINER AS SENIOR VICE PRESIDENT OF FIRST NATIONAL BANK OF DESTIN, AS MORTGAGEE, KNOWN TO ME TO BE THE INDIVIDUALS DESCRIBED IN AND WHO EXECUTED THE SAME THE USES AND PURPOSES HEREIN SET FORTH.

Janet Ann Brown
 NOTARY PUBLIC, STATE OF FLORIDA
 MY COMMISSION EXPIRES _____

SURVEYOR'S CERTIFICATE

I HEREBY CERTIFY THAT THIS PLAT IS A TRUE AND CORRECT REPRESENTATION OF THE LANDS SURVEYED, THAT THE SURVEY WAS MADE UNDER MY RESPONSIBLE DIRECTION AND SUPERVISION, THAT PERMANENT REFERENCE MONUMENTS, PRM, HAVE BEEN PLACED AS SHOWN, AND THE SURVEY DATA COMPLIES WITH ALL THE REQUIREMENTS OF CHAPTER 177 OF THE FLORIDA STATUTES.

Walter
 REG. LAND SURVEYOR NO. 204
 STATE OF FLORIDA

PLANNING COMMISSION'S CERTIFICATE

THIS CERTIFIES THAT THIS PLAT WAS PRESENTED TO THE PLANNING COMMISSION OF OKALOOSA COUNTY, FLORIDA, AND APPROVED BY THEM ON THE _____ DAY OF _____ 1985.

Mani J. Hill
 CHAIRMAN

COUNTY ENGINEER'S CERTIFICATE

THIS CERTIFIES THAT THIS PLAT WAS PRESENTED TO THE COUNTY ENGINEER OF OKALOOSA COUNTY, FLORIDA, AND APPROVED BY HIM ON THE _____ DAY OF _____ 1985.

David J. Heinisch
 COUNTY ENGINEER

COUNTY COMMISSIONER'S CERTIFICATE

THIS CERTIFIES THAT THIS PLAT WAS PRESENTED TO THE BOARD OF COUNTY COMMISSIONERS OF OKALOOSA COUNTY, FLORIDA, AND APPROVED BY THEM ON THE _____ DAY OF _____ 1985.

Burke CHAIRMAN
John MEMBER
Ann MEMBER
Walter MEMBER

COUNTY CLERK'S CERTIFICATE

I, NEWMAN C. BRACKIN, CLERK OF THE CIRCUIT COURT OF OKALOOSA COUNTY, FLORIDA, HEREBY CERTIFY THAT THIS PLAT COMPLIES WITH ALL PROVISIONS OF CHAPTER 177, FLORIDA STATUTES, AND WAS FILED FOR RECORD ON THE _____ DAY OF _____ 1985 IN PLAT BOOK _____ AT PAGE _____

Newman C. Brackin
 CLERK OF THE CIRCUIT COURT
Dr. W. Howard

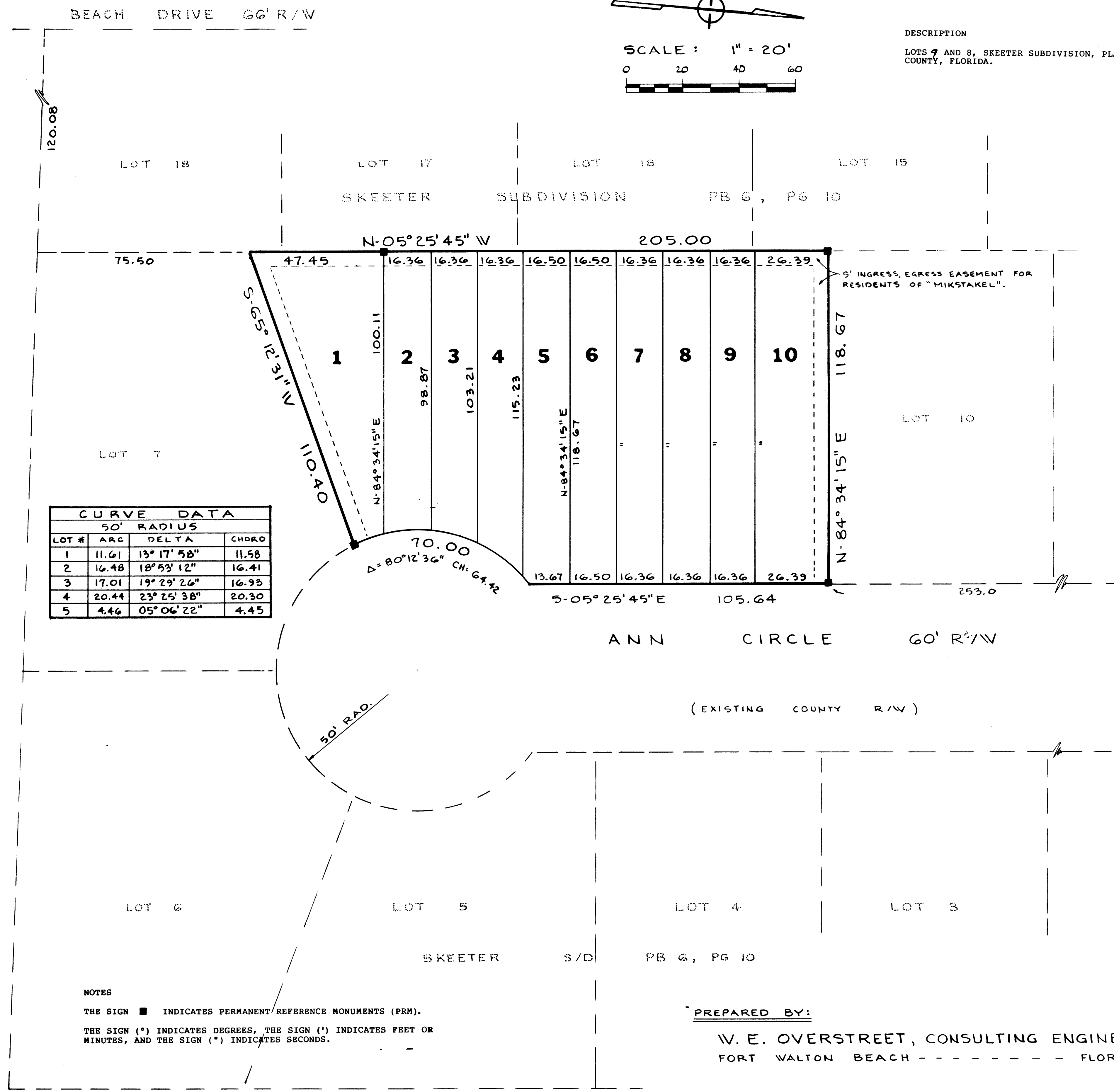
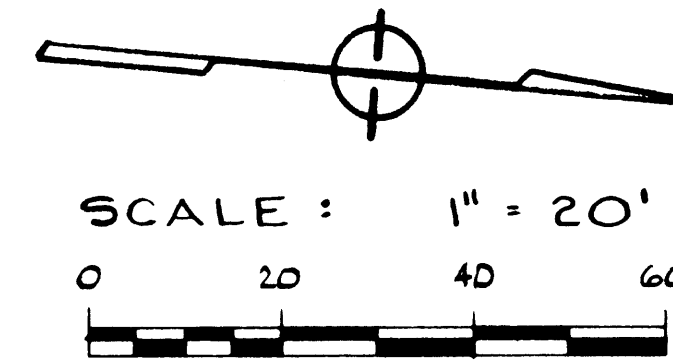
TITLE OPINION

IT IS THE OPINION OF THE UNDERSIGNED ATTORNEY-AT-LAW, LICENSED IN FLORIDA, THAT TITLE TO THE LAND DESCRIBED HEREON IS IN THE NAME OF THE DEDICATOR AS SHOWN HEREON AND THAT THERE ARE NO UNSATISFIED MORTGAGES ON THE LAND EXCEPT AS SHOWN IN THE DEDICATION. OPINION BASED ON SEARCH OF OFFICIAL RECORDS, SUBJECT TO RECORDED EASEMENTS AND RESTRICTIVE COVENANTS, AS OF 5 AUGUST 1985.

Carl A. Mann
 ATTORNEY-AT-LAW

DESCRIPTION

LOTS 9 AND 8, SKEETER SUBDIVISION, PLAT BOOK 6, PAGE 10, OKALOOSA COUNTY, FLORIDA.



CURVE DATA			
50' RADIUS			
LOT #	ARC	DELTA	CHORD
1	11.61	13° 17' 58"	11.58
2	16.48	18° 53' 12"	16.41
3	17.01	19° 29' 26"	16.93
4	20.44	23° 25' 38"	20.30
5	4.46	05° 06' 22"	4.45

NOTES

THE SIGN ■ INDICATES PERMANENT REFERENCE MONUMENTS (PRM).
 THE SIGN (°) INDICATES DEGREES, THE SIGN (') INDICATES FEET OR MINUTES, AND THE SIGN (") INDICATES SECONDS.

PREPARED BY:

W. E. OVERSTREET, CONSULTING ENGINEER
 FORT WALTON BEACH - - - - - FLORIDA

PB 9-41

Mikstake I