

DESCRIPTION

Lot 12, Block J, Kell-Aire Gardens Subdivision, as recorded in Plat Book 5, Page 48, Official Records of Okaloosa County, Florida.

SURVEYOR'S CERTIFICATE

I certify that I have surveyed and subdivided the land shown hereon and that permanent reference monuments (PRM) have been placed thereon as required by the Plat Act, Chapter 177.07, Acts of the Legislature of Florida, and that survey and plat are true and correct to the best of my knowledge and belief, as of 21 April 1975.

Ben J. Harshaway



DEDICATION

The undersigned owners of the real property included in this plat authorize it to be placed in the Official Records of Okaloosa County, Florida, and dedicate to the public the streets and other public areas shown hereon.

*[Signature]*

Witnesses:

Sandra B. Bolton  
Mary Co. Jeter

ACKNOWLEDGEMENT

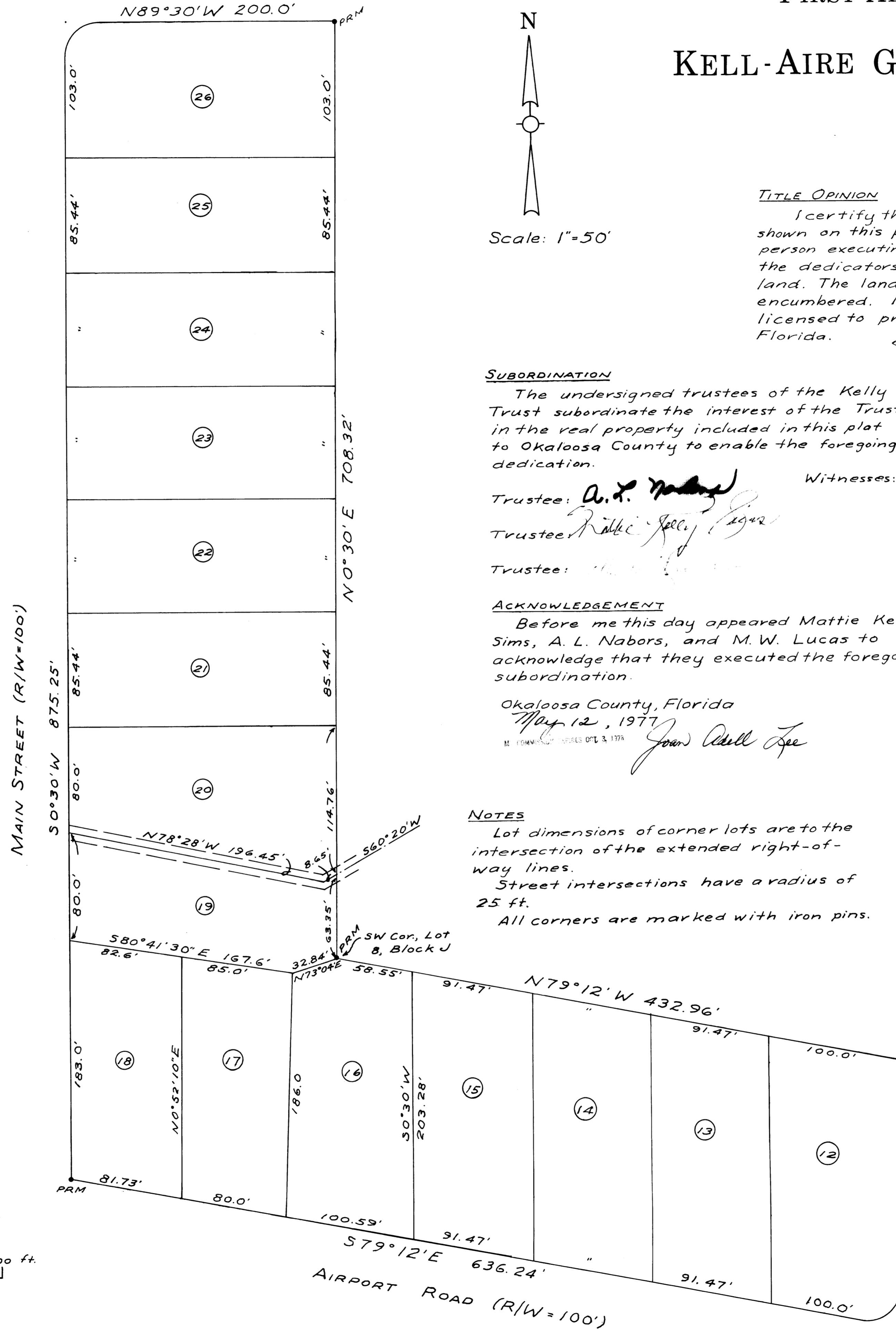
Before me this day appeared George Dana (Doodle) Harris to acknowledge that he executed the foregoing dedication.

Okaloosa County, Florida  
MAY 12th, 1977

*[Signature]*  
My commission expires July 7, 1980

WILD OAK AVENUE (R/W=66')

N89°30'W 200.0'



FIRST ADDITION TO

KELL-AIRE GARDENS SUBDIVISION

TITLE OPINION

I certify that the land described and shown on this plat is in the name of the person executing the dedication and that the dedicators have apparent title to the land. The land described on this plat is not encumbered. I am an attorney-at-law, licensed to practice in the State of Florida.

*[Signature]*

APPROVAL OF COUNTY ENGINEER

I certify that this plat was presented to and approved by me on May 12, 1977.

*[Signature]*  
County Engineer

APPROVAL OF PLANNING AND ZONING OFFICE

I certify that this plat was presented to my office and approved on May 12, 1977.

*[Signature]*  
Chairman

SUBORDINATION

The undersigned trustees of the Kelly Trust subordinate the interest of the Trust in the real property included in this plat to Okaloosa County to enable the foregoing dedication.

Trustee: *[Signature]*  
Trustee: *[Signature]*  
Trustee: *[Signature]*

Witnesses: *[Signature]*  
*[Signature]*

ACKNOWLEDGEMENT

Before me this day appeared Mattie Kelly Sims, A. L. Nabors, and M. W. Lucas to acknowledge that they executed the foregoing subordination.

Okaloosa County, Florida  
May 12, 1977  
*[Signature]*

NOTES

Lot dimensions of corner lots are to the intersection of the extended right-of-way lines.  
Street intersections have a radius of 25 ft.  
All corners are marked with iron pins.

APPROVAL OF COUNTY COMMISSIONERS

This certifies that this plat was presented to the Board of County Commissioners of Okaloosa County, Florida, and approved by them for recording on May 12, 1977.

Chairman: *[Signature]*  
Member: *[Signature]*  
Member: *[Signature]*  
Member: *[Signature]*

CLERK'S CERTIFICATE

I certify that this plat complies with the requirements of the Plat Act (Chapter 177, Florida Statutes), and was filed for record in my office on May 12, 1977, in Plat Book 5, Page 39.

*[Signature]*  
Clerk of the Circuit Court  
Okaloosa County, Florida

